

MOBILITY IN ACTION · VIENNA UP 2026

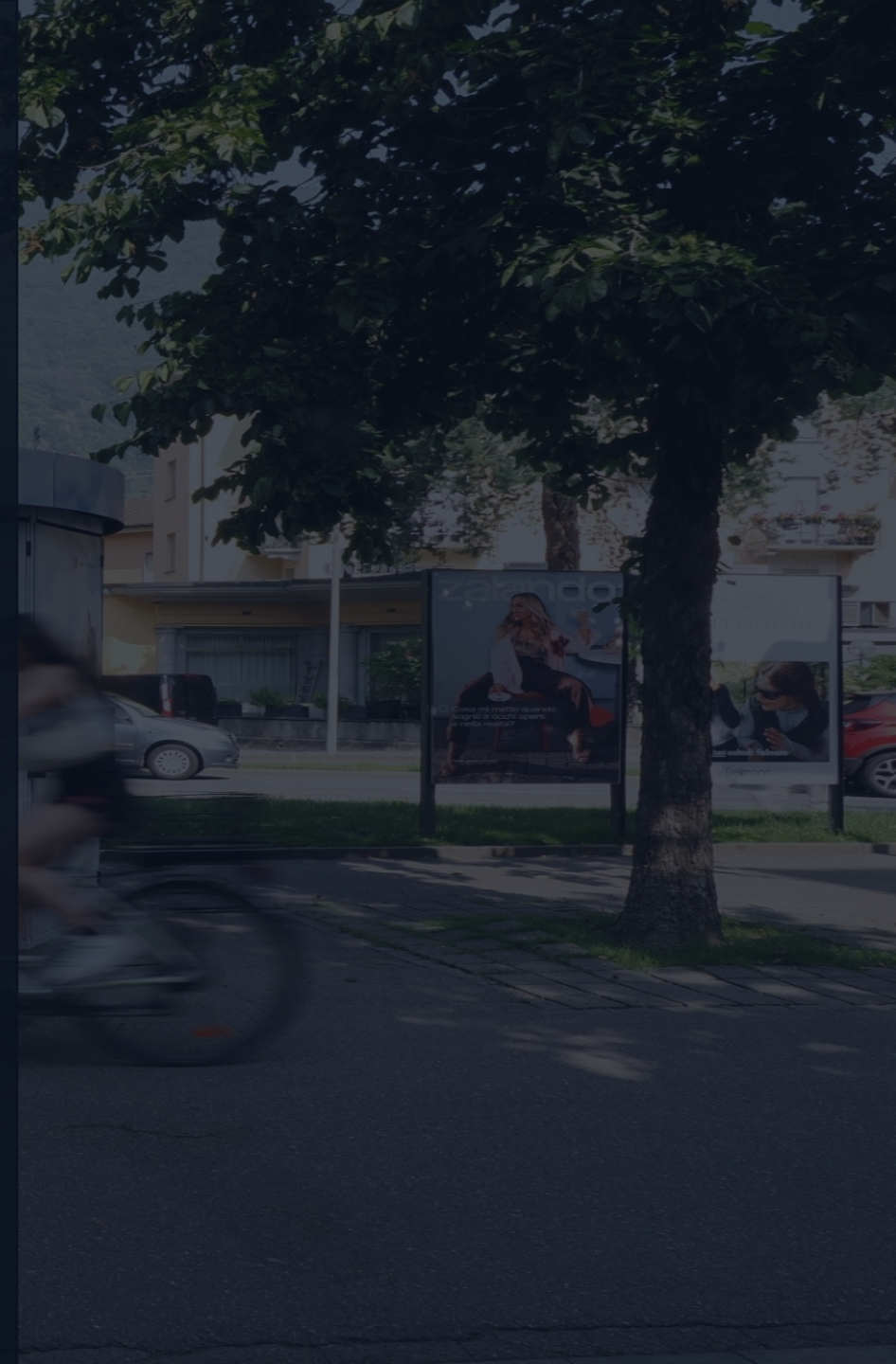
# KARUSO

Die Bike-Box mit dem Dreh

**Secure, space-saving bike parking –  
ready for immediate deployment.**

The smart bike-box for cities, companies & mobility hubs.

KARUSO GmbH · Biberach, Germany · [karuso.eu](http://karuso.eu)



## THE PROBLEM

# Safe parking is the #1 barrier to cycling adoption.



## 300K+

bikes stolen / year in Germany

### Theft & Insecurity

Expensive e-bikes are prime targets — riders avoid cycling without safe parking.



## €9.2B

EU cycling infrastructure pipeline

### E-Bike Boom, Zero Infrastructure

Sales surge — but secure parking is the missing link in the mobility chain.



## #1

barrier to cycling adoption

### Cities Under Pressure

No space for bulky shelters. Permits slow everything. Cities need fast, funded solutions now.

## THE SOLUTION

# KARUSO – The Bike-Box with the Twist.



### 12 Bikes in 12 m<sup>2</sup>

- Rotatable — one access point
- No separate building needed
- Vertical parking = max efficiency



### Secure & Lockable

- Not visible from outside
- Security locking cylinders
- Anti-theft bike mount
- Hooks & shelves for gear



### Mobile & Weatherproof

- No building permit needed
- Modular, disassemblable
- Full weather protection



### App Access & Booking

- Book spontaneously or ahead
- Flexible pricing & payment
- System integration



# From arrival to safe parking in seconds.



01

## Access via App

Unlock your spot via the KARUSO app — or integrate into existing mobility apps. No keys, no waiting.

02

## Park & Lock

Rotate the system to your booked compartment. The gas-pressure spring lifts the bike. Close the door — weatherproof and theft-protected.

03

## Retrieve 24/7

Unlock digitally, pay the fee, and ride away. A seamless experience, available around the clock.

GET STARTED

# Deployment models that scale with every customer.

RENTAL · short-term

## Events & pop-ups

Daily / weekly rental, full setup & teardown included. Ideal for festivals, fairs and event mobility.

*e.g. festivals, sports & culture events*

LEASING · medium-term

## Corporate & B2B

Monthly fee with maintenance and digital services. Branded units for employee parking and ESG goals.

*e.g. company campuses, premium destinations*

PURCHASE · long-term

## City & infrastructure

Permanent installation at stations, hubs and public spaces. Eligible for cycling and mobility subsidies.

*e.g. transit hubs, residential & city centres*

# Three revenue streams. One compact unit.



## User Fees

Small per-session parking fee. Operators keep the revenue. Works for cities, events and corporates.



## Public Subsidies

KARUSO qualifies for cycling, mobility and climate grants — significantly reducing acquisition cost.



## Advertising & Branding

Side panels and doors carry ads or sponsor branding — perfect for corporates, events and city partners.

TRACTION & USE CASES

# Proven in the field. Ready for Austria.

**70%**

Avg. Utilization

**< 24h**

Setup Time

**0**

Theft Incidents



## Transit Hubs

P+R stations & intermodal points



## Corporate

Employee e-bike parking & ESG



## Residential

Dense urban areas, no construction

# Traditional vs. KARUSO

Feature	Traditional	KARUSO
No building permit	X	✓
Setup in < 24h	X	✓
Minimal footprint (12 m <sup>2</sup> )	X	✓
Theft protection	X	✓
Smart & app-based	X	✓
Modular & relocatable	X	✓

## Economic & Strategic Value



### Revenue generation

User fees & advertising opportunities



### Space efficiency

More bikes on less space



### Location value

Increases attractiveness & usability



### Public funding

Eligible for subsidies



### Low effort

Minimal operations, high demand

ROADMAP

# Built for rapid, sustainable growth.

2024-2025

## Pilot & Validation

Deployments in Munich, Biberach and Bellinzona. Proven utilization and adoption.



2025-2026

## Scale via Events & Corporates

International expansion through major events, mobility fairs and B2B partners.



2026-2027

## Smart Add-Ons

Solar roofs, charging points, occupancy data and deeper mobility-app integrations.



2027-2030

## EU-Wide Rollout

Standardised, plug-and-play units with European production and city partnerships.



## THE TEAM

# A family-driven team building smarter mobility for European cities.

AS

**Anna-Maria Schmid**

**CEO**

Engineer & Managing Director — sales, partnerships and customer success.

CS

**Christian Schmid**

**CPO**

Engineer and product developer — makes KARUSO work flawlessly in the real world.

JS

**Julius Schmid**

**CTO**

Builds the KARUSO app and keeps all digital systems running reliably.

HS

**Heidi Schmid**

**CFO**

Manages finance, budgeting and funding programs supporting growth.

DA

**Dirk Amann**

**Sales**

Drives commercial relationships with cities, corporates and event organisers.

THE ASK

# Order your KARUSO units today.

Delivered & installed within weeks. Funding support included.

---

**Book a call — get your KARUSO**

[info@karuso.eu](mailto:info@karuso.eu) • [www.karuso.eu](http://www.karuso.eu) • +49 7351 22348